



# ***Rotate to* ParaMite®**

AND BREAK THE MITE CYCLE



SUMITOMO CHEMICAL

For more information visit [www.sumitomo-chem.com.au](http://www.sumitomo-chem.com.au)

© Registered trademark of Sumitomo Chemical Co. Japan

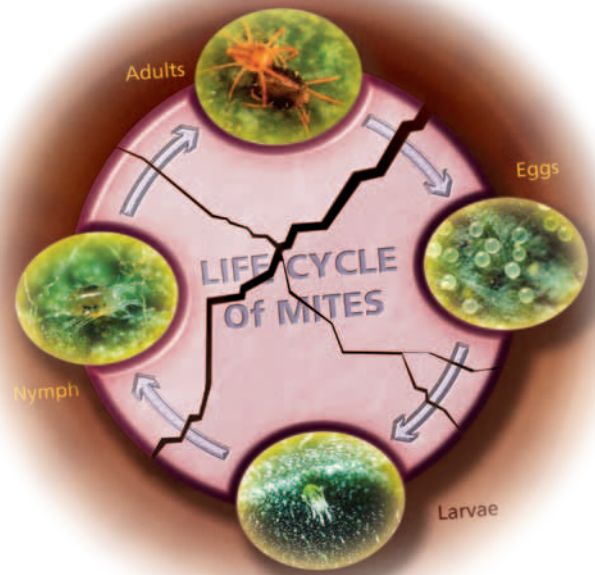
Registration for control of Oriental spider mites in citrus with ParaMite Selective Miticide is expected in November 2010\*.

ParaMite is a mite-specific growth regulator which interferes with the life cycle to prevent mites from reaching maturity. It disrupts the mite population by killing eggs before they hatch, by inhibiting the moulting process at several points in the pest life cycle, and by sterilising adult females.

Initially ParaMite will be registered for control of Oriental spider mite (*Eutetranychus orientalis*). Trial results indicate control for at least four weeks after application. ParaMite may also suppress Broad mite (*Polyphagotarsonemus latus*), Brown citrus rust mite (*Tegolophus australis*) and Yellow citrus rust mite (*Phyllocoptruta oleivora*), albeit for shorter periods or at higher rates. These additional pests may be added to the label later.

Because ParaMite does not control adult mites, application should occur early while the population still consists mainly of eggs and/or nymphs, usually while the population is still building in numbers. If large numbers of adult mites are present at the time of application, the addition of a knock-down type miticide is recommended.

ParaMite is a new class of miticide, with no known cases of resistance confirmed in Australia. However, to prevent resistance and to preserve this product for as long as possible, only one application per season is allowed.



## DIRECTIONS FOR USE

CITRUS PEST	RATE	COMMENTS
Oriental Spider Mites	35 mL/100 L water	Water rates of 2000-4000 L/ha are generally used. Concentrate spraying is not recommended. DO NOT apply more than one ParaMite spray per season. If re-treatment is required, use a miticide with a different mode of action.

## RESISTANCE MANAGEMENT

Mites are notorious for developing resistance to miticides. Since it is a new and unrelated mode of action, ParaMite represents a welcome addition to the limited number of options available to citrus growers. To delay the development of resistance, and to prolong the life of this product, do not apply more than one ParaMite spray per season and always rotate between different mode of action groups.

## INTEGRATED PEST MANAGEMENT

Being a mite-specific IGR, ParaMite is considered to have a low impact on beneficial insects. It has no or low toxicity to beetles, predatory mites, lacewings, parasitic wasps and predatory bugs.



SUMITOMO CHEMICAL

SUMITOMO CHEMICAL AUSTRALIA PTY LTD

ABN 21 081 096 255 [www.sumitomo-chem.com.au](http://www.sumitomo-chem.com.au)

Level 5, 51 Rawson Street, EPPING NSW 2121

TEL: (02) 8752 9000 FAX: (02) 8752 9099

ParaMite® is a registered trademark of Sumitomo Chemical Co. Japan.

\* Always use ParaMite according to the most recent label, available from [www.sumitomo-chem.com.au](http://www.sumitomo-chem.com.au)