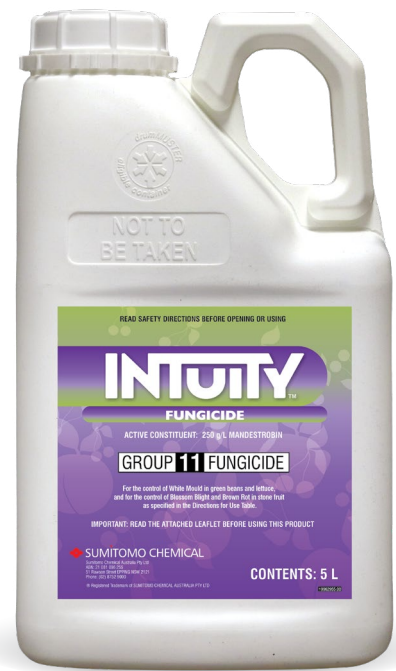




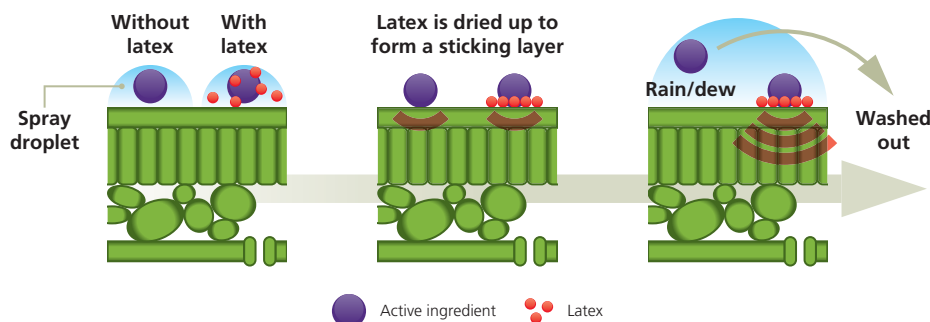
The New Standard For Powdery Mildew Control In Cucurbits

Intuity™ is now registered for Powdery mildew control in Cucurbits crops in addition to White rot control and Downy mildew suppression in Onions, and Sclerotinia control in Green beans and Lettuce.

- Active constituent: 250 g/L Mandestrobin
- Group 11 fungicide
- Non scheduled with low user risk
- Easy to use SC liquid formulation
- Patented latex adjuvant technology



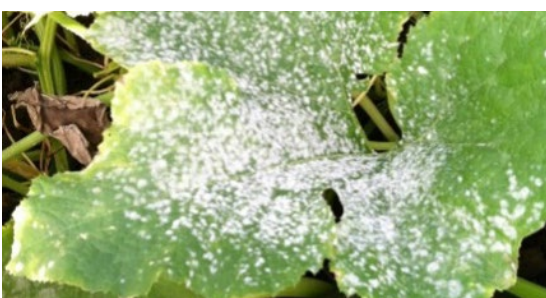
Patented latex formulation



The patented latex formulation of Intuity has been developed to aid with rainfastness.

The 'latex adjuvant' helps to stick the active ingredient onto the plant meaning more of the active ingredient at the point of protection for a longer period.

Powdery mildew in cucurbits



The first signs of Powdery mildew in Cucurbits are pale yellow leaf spots. White powdery spots can then form on both upper and lower leaf surfaces as well as stems, and quickly expand into large blotches. Large blotches can cover the entire leaf, petiole and stem surfaces.

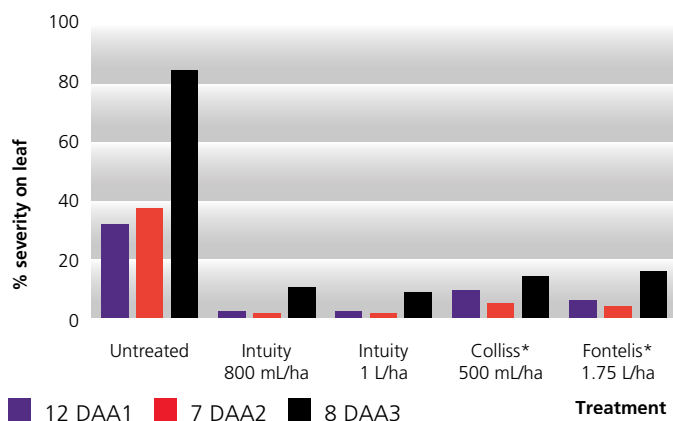
Squash crop with significant leaf infection with Powdery mildew showing typical powdery white colonies.

Directions For Use: Cucurbits

Crop	Disease	Rate	Critical Comments
Cucurbits	Powdery Mildew	1-1.2 L/ha	<p>Make the first application prior to or at the first sign of disease development. Apply two consecutive sprays of INTUITY Fungicide at appropriate intervals (usually 7-14 days). Use the higher rate under conditions of higher disease pressure or when crops are more than 50% fully grown. Good coverage is important to get good control. Generally, water rates of 300-600 L/ha should be used with the rate increasing as Cucurbit size increases.</p> <p>DO NOT apply more than two consecutive sprays or more than three times per crop. These sprays should be alternated with fungicides from a different mode of action group.</p>

Trial Results

Trial on Powdery mildew in zucchini, Bowen QLD



Three sprays (1,2 and 3) applied commencing at the first sign of Powdery mildew and then at fortnightly intervals. cv. Congo. Applications at 500 L/ha of water.

Intuity treated Zucchini plants clearly show clean stems with no Powdery mildew symptoms versus untreated plants with significant white colonies present.

For further information on Intuity Fungicide please contact:

Andrew Franklin (FNQ)	0408 063 371
Danita Clark (Central QLD)	0447 000 622
Patrick Press (SE Qld & NSW Northern Rivers)	0417 085 160
Ardina Jackson (NW NSW)	0477 967 509
Phil Glover (Central & Coastal NSW)	0418 668 586
Charles McClintock (S NSW)	0429 004 290
Frank Galluccio (NW VIC & Riverina)	0418 502 466
Jack Bartels (Eastern VIC & TAS)	0488 036 313
Matthew Hincks (SA)	0409 807 301
Imre Toth (WA)	0429 105 381

OR our Sydney office: (02) 8752 9000

© Registered trademark of Sumitomo Chemical Australia Pty Ltd.
* Non Sumitomo Chemical Australia Pty Ltd trademark.

 **SUMITOMO CHEMICAL**
AgroSolutions Division

www.sumitomo-chem.com.au

ABN 21 081 096 255

Level 5, 51 Rawson Street EPPING NSW 2121

TEL: (02) 8752 9000 FAX: (02) 8752 9099



Scan here to see more
information about
Intuity Fungicide